






Adam Hayes - Finchley Central Office - Lettings 348 Regents Park Road, Finchley Central, London, N3 2LJ

Tel: 0208 189 6333 Email: info@adam-hayes.co.uk Web: www.adam-hayes.co.uk

Cyprus Road, Finchley Central, N3 3RY

£2,250 PCM

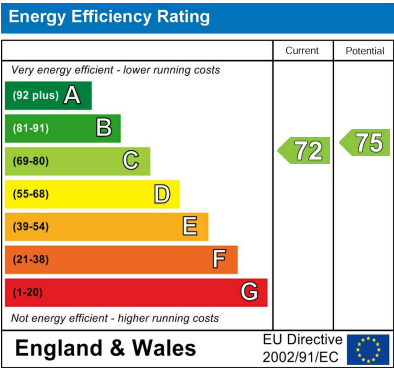
 2 Bedrooms  2 Bathrooms  1 Receptions

Key Features

- Two Bedroom Ground Floor Flat
- Close to Finchley Central Tube
- Own Garden
- Two Bathrooms
- Good Size Lounge
- Conservatory

Other Information

Council Tax Band: D
Length of Tenancy: Long Let
Deposit: £2,595



Nearest Stations

- Finchley Central

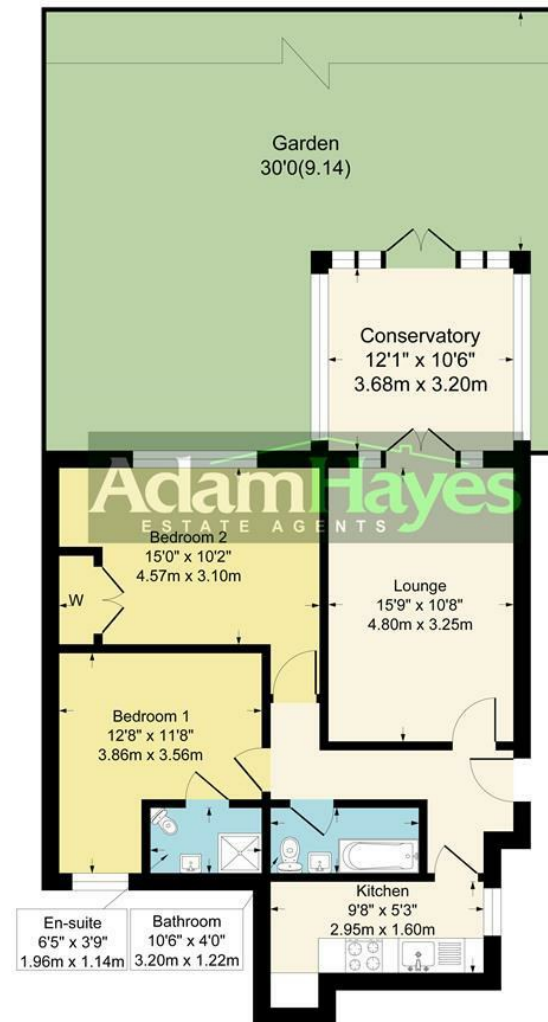
Property Description

A recently decorated two double bedroom two bathroom (one an ensuite shower) spacious ground floor conversion situated in this excellent location, within easy access to Finchley Central Tube Station and local amenities. The residence features a rear facing private garden, a good size lounge which leads onto a lovely conservatory, double glazing and gas central heating. The property is also within close proximity to multiple shops, cafes, restaurants and local supermarkets. Early viewings are highly recommended!

Adam Hayes - Finchley Central Office - Lettings 348 Regents Park Road, Finchley Central, London, N3 2LJ

Tel: 0208 189 6333 Email: info@adam-hayes.co.uk Web: www.adam-hayes.co.uk

**Approximate Gross Internal Area
805 sq ft - 75 sq m**



Although every attempt has been made to ensure accuracy, all measurements are approximate.
This floorplan is for illustrative purposes only and not to scale.
Measured in accordance with RICS Standards.

These particulars, whilst believed to be accurate, are set out as a general outline only for guidance and do not constitute any part of an offer or contract. Intending purchasers or prospective tenants should not rely on them as statements or representation of fact, but must satisfy themselves by inspection or otherwise as to their accuracy. We have not carried out a detailed survey, not tested the services, appliances and specific fittings. Room sizes should not be relied upon for carpets and furnishings. The measurements given are approximate. No person in this firm's employment has the authority to make or give any representation or warranty in respect of the property.